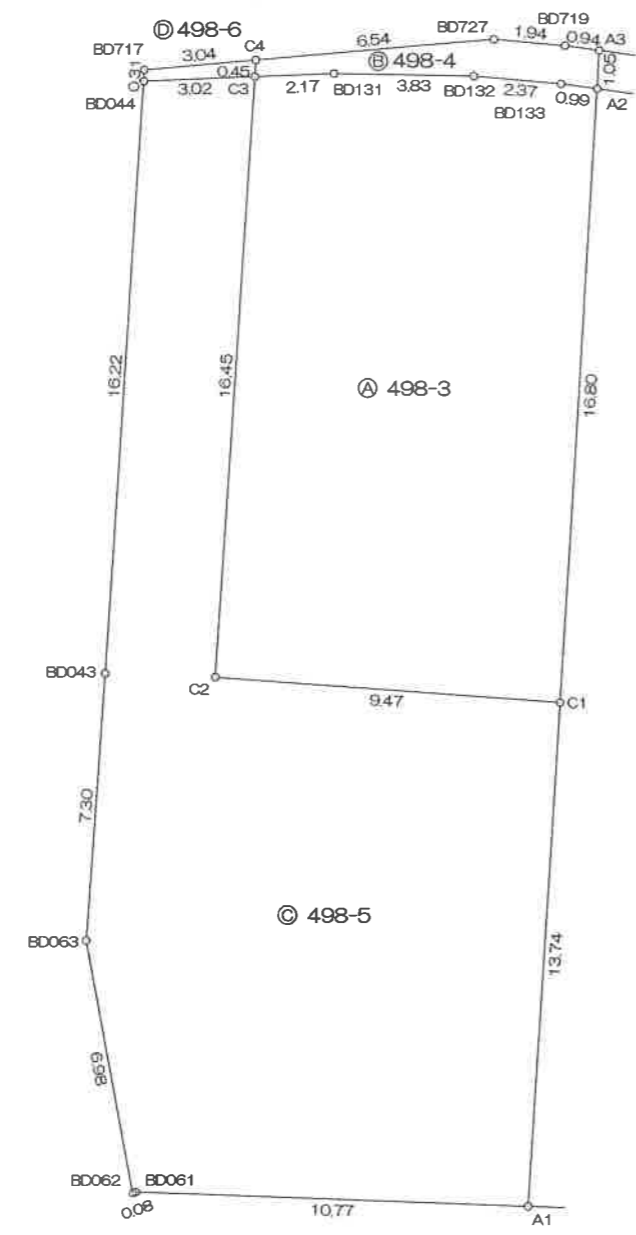


求積表 ②



S=1/200



求積表

地番 498-3			
NO	X	Y	辺長
A2	-111678.406	-10243.092	0.99
BD133	-111678.271	-10244.078	2.37
BD132	-111678.062	-10246.439	3.83
BD131	-111677.995	-10250.275	2.17
C3	-111678.085	-10252.450	16.45
C2	-111694.502	-10253.578	9.47
C1	-111695.182	-10244.129	16.80
面積	157.9811745		
地積	157.98 m ²		
坪数	47.78 坪		

地番 498-4			
NO	X	Y	辺長
C4	-111677.631	-10252.419	0.45
C3	-111678.085	-10252.450	2.17
BD131	-111677.995	-10250.275	3.83
BD132	-111678.062	-10246.439	2.37
BD133	-111678.271	-10244.078	0.99
A2	-111678.406	-10243.092	1.05
A3	-111677.355	-10243.027	0.94
BD719	-111677.227	-10243.960	1.94
BD727	-111677.056	-10245.896	6.54
面積	7.5257305		
地積	7.52 m ²		
坪数	2.27 坪		

地番 498-5			
NO	X	Y	辺長
BD062	-111708.551	-10255.831	0.08
BD061	-111708.522	-10255.747	10.77
A1	-111708.897	-10244.977	13.74
C1	-111695.182	-10244.129	9.47
C2	-111694.502	-10253.578	16.45
C3	-111678.085	-10252.450	3.02
BD044	-111678.209	-10255.477	16.22
BD043	-111694.396	-10256.589	7.30
BD063	-111701.680	-10257.113	6.98
面積	218.4916970		
地積	218.49 m ²		
坪数	66.09 坪		

地番 498-6			
NO	X	Y	辺長
BD717	-111677.899	-10255.456	0.31
BD044	-111678.209	-10255.477	3.02
C3	-111678.085	-10252.450	0.45
C4	-111677.631	-10252.419	3.04
面積	1.1531280		
地積	1.15 m ²		
坪数	0.34 坪		

総合計面積	385.1517300 m ²
-------	----------------------------

地番	面積
Ⓐ 498-3	157.9811745 m ²
Ⓑ 498-4	7.5257305 m ²
Ⓒ 498-5	218.4916970 m ²
Ⓓ 498-6	1.1531280 m ²